



Visual Planner

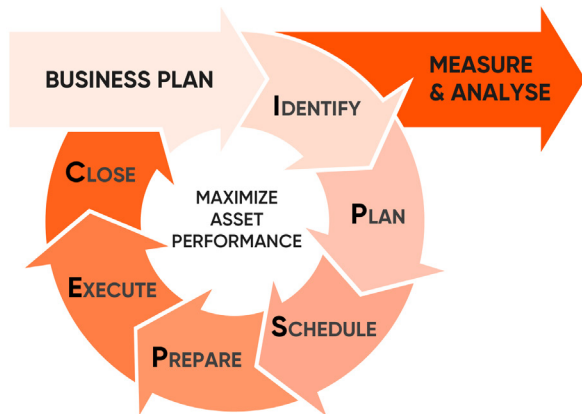


Transform your organization to
MAINTENANCE 4.0

Visual Planner

Digital Platform

Doing the right maintenance, at the right time,
at the lowest cost.

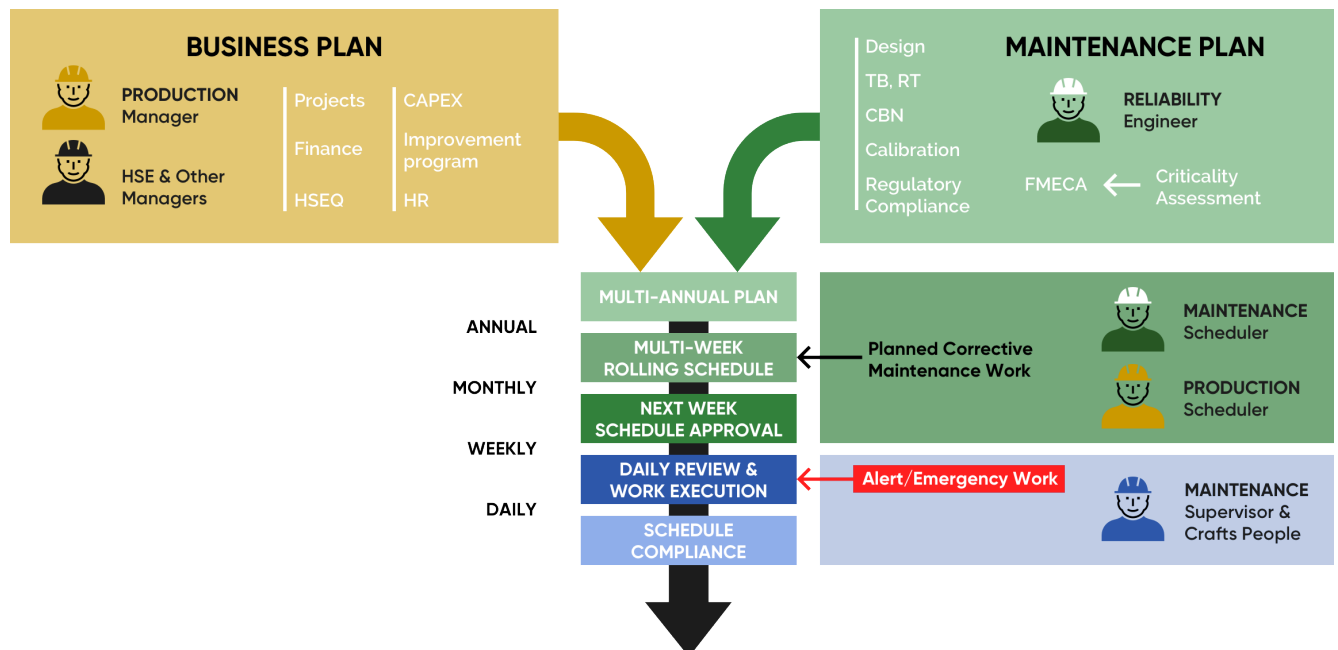


Visual Planner empowers asset intensive organizations to transition to **planned maintenance.**

Unplanned maintenance costs 3 to 10 times more than planned maintenance.

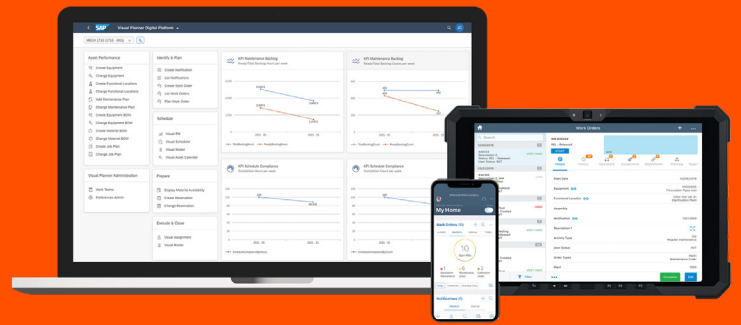
Visual Planner encompasses all elements of the **IPSPEC** planned maintenance work execution cycle under a single digital platform, allowing organizations to **transition to a planned work culture** in the most efficient way.

Efficient Scheduling from Long-Term to Short-Term



Visual Planner enables the implementation of a most efficient multi-week scheduling process, ensuring that the work required to prevent asset failure is performed on time, while maximizing technician productivity and minimizing maintenance costs.

Visual Planner is a set of quick and easy graphical applications that allow maintenance and production schedulers to visualize all the elements required to schedule and execute the work on time.



Visual PM, Visual Scheduler and **Visual Roster** allow schedulers to perform long term planning, as well as visualize and select the work required to be completed each week to prevent equipment failures, and accurately determine the resources required and available to execute the work.

- Perform long term capacity planning and workload leveling
- Leverage intelligent auto-scheduling
- Manage labour resources availability in seconds
- Optimize graphically each week's schedule
- Present concise visual information at maintenance/operations meetings to approve next week's schedule

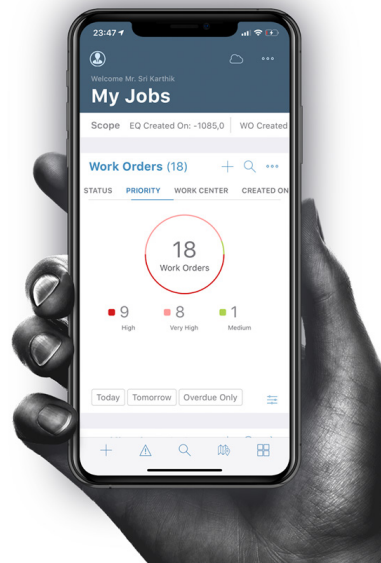


Visual Assignment allows supervisors to overcome the multitude of daily challenges to completing jobs on time and achieve the highest level of schedule compliance. It allows them to spend minimum time on the computer and maximize the time spent with their crew.

- Assign a full crew to a shift in less than a minute
- Quickly visualize work progression and emergencies
- Make daily schedule adjustments in seconds
- Maximize craft productivity



Mobile Supervisor and **mWorkorder** help maximize the productivity of supervisors and tradespeople while ensuring that work is completed as efficiently, safely, and with the highest quality.



State-of-the-art technical architecture

Visual Planner has been embedded in SAP and IBM Maximo using the most up-to-date technical architecture. This approach allows Visual Planner to have the same look and feel as the host software, which leads to **seamless and enthusiastic adoption by the users**.

Visual Planner's architecture provides a **single point of truth** by ensuring that the host system's data is accessed and updated directly and instantly using the host's standard architecture. It ensures the utmost data security versus interfaced systems, which often have latency and cause data integrity issues.

This approach also ensures the **lowest cost of ownership**, as there are no external systems to install and manage. This means your IT team will already be familiar with Visual Planner's technology, without requiring additional training on an external system.

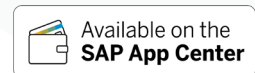
An award winning solution



Visual Planner for IBM Maximo received the first ever ISMLE award as the best add-on of all IBM softwares.



Visual Planner for SAP runs on the SAP Cloud platform and is available for SAP S/4HANA® Cloud or on-premise, as well as ECC versions.



Minimize your maintenance costs

Backlog

40%

reduction in
4 months

Labour productivity

10-35%

increase

PM Compliance

>95%

compliance achieved
in **2 months**

Overtime

20-60%

reduction

Visual Planner is used by **over 10,000 reliability professionals worldwide** providing outstanding value to all industrial sectors.

Here's what people are saying **about Visual Planner**.

The best multi-week scheduling tool !

Visual Planner allowed us to ensure that our maintenance work is now always completed on time and we maximize our employees' productivity.

Team Leader, Maintenance Excellence
World leading oil & gas producer

Visual Planner is a great system!

I really like the Visual Planner. It allows you to fully load schedules for the week and then easily see the priorities or individual work orders in a graphical manner. This graphical ability helps you manage the weekly schedule during the daily churn as the week unfolds. Fully loading schedules and monitoring schedule compliance is the key to high crew productivity.

Doc Palmer
Author of the Maintenance Planning and Scheduling Handbook

CASE STUDY - ENERGY SECTOR

The Challenge

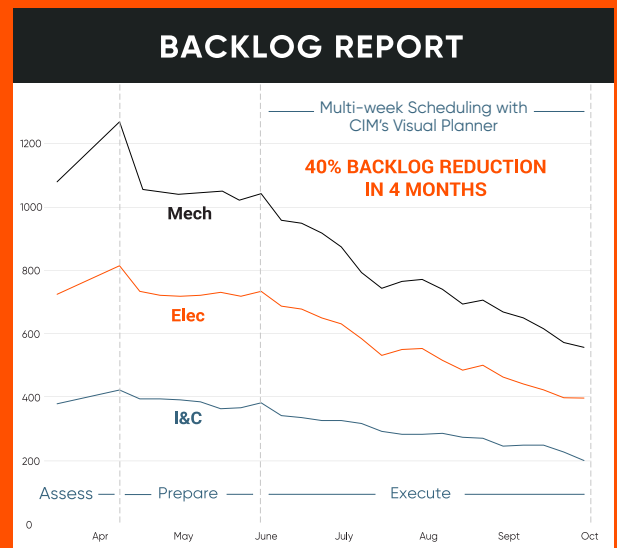
The challenge for this major energy company was to increase PM compliance on critical equipment and reduce maintenance execution costs by improving the scheduling process. The planning and scheduling processes for routine maintenance were not uniform across their 143 sites. Some did not have a formal scheduling process in place, while others were managing their routine maintenance scheduling using Primavera P6 or spreadsheets. They used Visual Planner to implement an efficient and standard multi-week scheduling process across their sites, which allowed them to achieve their equipment reliability and maintenance execution cost reduction objectives.

"Implementing an efficient multi-week scheduling process with Visual Planner provided the highest and quickest ROI of all the EAM projects we have ever done".

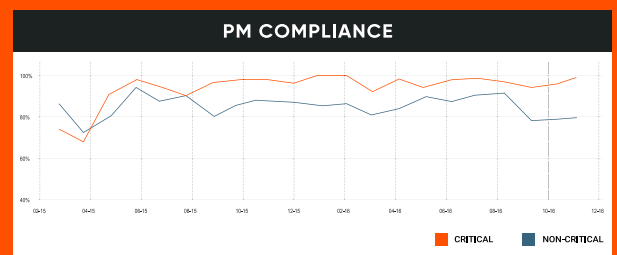
Project Engineer
Major US energy producer

The Benefits

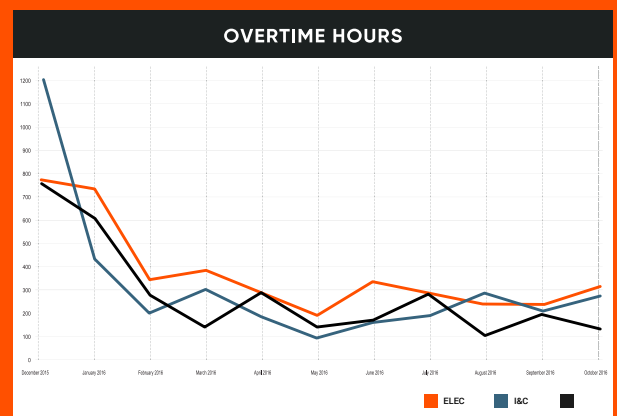
They achieved a 12% increase in work orders done every week and reduced their backlog by 40% in 4 months.



In 2 months, they increased PM compliance on critical equipment from 70% to close to 100% every week.



They reduced overtime by 20% to 60% throughout their sites in 4 months.



Direct maintenance cost reduction of 6 times the initial implementation costs year after year.

We understand your industry



Oil & Gas



Mining



Power Generation



Utilities



Manufacturing



Pharmaceutical



Facilities



Transportation



Rail



Visual Planner

visualplanner.app

USA +1 877 449 7323

Canada +1 450 678-8337

Abu Dhabi +971 50 3894260

France / South Africa +1 877 449-7323